

C.I.A. Newsletter

Community Information Agency

Volume 19
Issue 12

Dec.
2025

*Local information
you can use.*

**Support your
community.**



Potlatch Senior Nutrition Program Meals

Family and friends, join us for delicious, nutritious meals on Mondays and Fridays at noon in the Senior Center, 645 Pine St., Potlatch, ID.

The lunches, consisting of a main dish, veggies, fruit, and dessert, are served cafeteria-style. The suggested donation is \$4 per meal. See the menu entrees below, or call on meal days to find out what's being served.

Inside dining is an option, or call by 10 a.m. on meal day for delivery or pickup options. You must call ahead for delivery or pickup: **208-875-1071**.

12/1 Biscuits & Gravy	12/15 Canadian Bacon & Cheese Pizza
12/5 Pulled Pork Sandwich	12/19 Beef Stew
12/8 Chicken & Rice Bake	12/22 Ham Dinner
12/12 Ham Casserole	



Potlatch Library

208-875-1036

[facebook.com/
potlatchfriends](https://www.facebook.com/potlatchfriends)

Monday	Noon-6 p.m.
Tuesday	1-6 p.m.
Wednesday	1-6 p.m.
Thursday	1-6 p.m.
Friday	Noon-5 p.m.
Closed weekends	

Community Information Agency Ad Rates & Info:

Bonnie Hash 208-875-0897 or 208-596-0624	1/8 page \$30 1/4 page \$45	1/2 page \$75 Full page \$140
--	--------------------------------	----------------------------------

Michol Ann Jensen
Email:
[potlatchcia@
potlatch.com](mailto:potlatchcia@potlatch.com)
or call/no texts
208-875-1094

By the 20th of the month, email your print-ready ad (or ad information if you need us to design it) to potlatchcia@potlatch.com.

&
Mail your check payable to
Community Information Agency,
PO Box 44, Princeton, ID 83857

Palouse River
Community Center
PO Box 44 Princeton, ID 83857

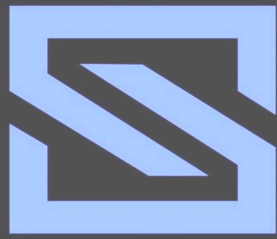
PRSRT STD
ECRWS
U.S. POSTAGE
PAID
EDDM Retail

Inside Information

Senior Meals, *see pg. 1*
Free budgeting help, *see pg. 2*
Children's Christmas Store, *see pg. 3*
F.M.B.E. 4-H news, *see pg. 3*
Potlatch Food Pantry, *see pg. 3*
Scout News & Christmas Tree Lot, *see pg. 5*
Viola CC Cookie Exchange, *see pg. 6*
Mountain Home Grange events, *see pg. 8*
Clothing Closet clothes bank *see pg. 8*
Cayuse Kids Saddle Club, *see pg. 9*
Lighted Parade Entry Form, *see pg. 9*
St. Mary's Christmas Bazaar, *see pg. 10*
Christmas at the Cabin, *see pg. 10*
Lions Club Sign Board, *see pg. 10*
Fit and Fall Proof, *see pg. 10*
Lions Club Pictures with Santa, *see pg. 11*
Gamebird Foundation Raffle, *see pg. 12*
Our Schools, *see pg. 14*
Potlatch Talent Show, *see pg. 14*
Christmas Eve Services, *see pgs. 16 & 17*
Gamebird Foundation News, *see pg. 18*

This free CIA Newsletter is available monthly by email for you, your family, or friends. To be added to the list, send your name with email address to potlatchcia@potlatch.com.

This newsletter shares community updates, educational content, and local business ads for informational purposes only. The information contained within is not legal, financial, medical, or professional advice. Inclusion of any information does not imply endorsement on our behalf.



SKYLINE LANDWORKS

OWNER: TRAVIS WINTHER

208-596-3398

5288 Highway 95

Viola, ID 83872

Skylinelandworks@gmail.com

PUBLIC WORKS LICENSE # 074281-C-4

CONTRACTORS LICENSE # RCE-69462

- Excavation
- Site Prep/Mobile Home Site Prep
- Driveway/Road Construction
- Pond Construction/Lining
- Complex Septic Certified
- Water and Power Lines
- Culvert Install
- Retaining Wall
- Rock
- Tree Removal
- Forestry Mulching/Fire Prevention
- Demolition
- Fencing
- Pole Barn Construction
- Building Construction
- Water Distribution License
- Wastewater Collection License

Palouse Valley Septic Service LLC

TYSON KOEHN

**Tank Pumping – Septic Systems Installed
Excavation & Gravel Hauling**

(208)875-1350

PO Box 367

(208)596-6016

POTLATCH, ID 83855

septiccleaner@gmail.com

ID# RCE-34655
WA# PALOUVS875CE

1007 Rothfork Road

violacommunitycenter.com

Call 208-274-3223 to rent the VCC for your:

Party
Wedding
Vendor Fair
Meeting
Memorial
Food Prep

ask about
Mon. - Thurs.
rental rates



Building Features:
Great Hall | Commercial Kitchen | Board Room



Connecting Community - Fostering Charitable Action - Promoting Arts & Education

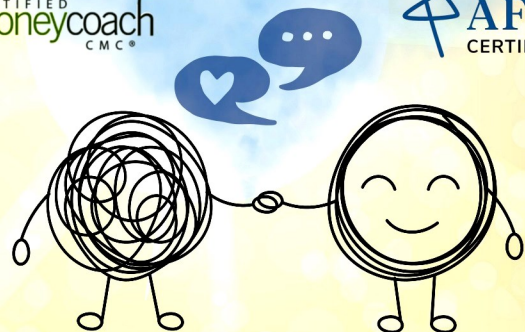
Feeling financial strain from the
shutdown?

Hope is here

Contact Karen for **free** budgeting help and local resource connections. Together, we'll stretch every dollar and find creative ways to ease the burden.

CERTIFIED
moneycoach
CMC®

AFC
CERTIFIED



* free * confidential * open to all members of the community *

☎ 208-883-2241

✉ krichel@uidaho.edu

University of Idaho
Extension
Latah County

The University of Idaho is an equal-opportunity employer and educational institution. We offer our programs to persons regardless of race, color, national origin, gender, religion, age, sexual orientation, or disability.

American Legion Cabin – Potlatch –

Open for rentals:
vendor fairs, weddings,
meetings, memorials



For booking information, call Lenny at 208-301-1632
or Bill at 208-875-9626



RIVER ELECTRIC LLC
Chris Oliver—Master Electrician
503-680-4452
riverelectriccorp@gmail.com
PO Box 23, Princeton, ID 83857
ID Lic.#049923

Electrical Contractor
*Residential
*Commercial
*Industrial

POTLATCH ELEMENTARY PTO PRESENTS
OUR FOURTH ANNUAL

Children's Christmas Store!

WE ARE IN NEED OF DONATIONS!

We are looking for **GENTLY USED** items for all ages!
Toys, tools, household items, decor and more!
These are Christmas gifts that children will pick
for their families!
(Please no clothes or shoes - hats and new socks okay!)

**Drop off location is Idaho's Best Homes & Land
in the blue bin on their lovely front porch
beginning November 3, 2025**

Thank you Idaho's Best for your continued support!
Thank you to all community members who donate
to this wonderful event!

**SAVE THE DATE:
DECEMBER 13, 2025**

FROM 10AM-12PM
Potlatch Elementary School Gymnasium
All children encouraged to come shop!



F.M.B.E. 4-H

Sophia called the F.M.B.E. 4-H meeting to order at 6:43 on Wednesday, November 12, 2025. The American Flag salute was led by Lincoln, and the 4-H Pledge was led by Berkley. The secretary was absent, so no minutes were read. Clara read the Treasurer's Report. John moved to approve the Treasurer's Report, and Erin seconded the motion.

Two wonderful ladies studying at the University of Idaho, Anna and Lexi, came and talked to us about their experiences growing up in 4-H. Did you know that you could show a goldfish at the fair? They also showed us how to play several games that helped us get to know each other better.

Leader Reports: You can take pictures of your thank you letters thanking sponsors and buyers and send them to Joe. He will send you your checks.

Old Business: We had reports on the 4-H movie night hosted at the PRCC, as well as reports on highway cleanup.

New Business: County Awards night is on Sunday, Nov. 16. Collin moved to approve having hot cocoa sales and donating to the sharing tree. Lila seconded the motion. The F.M.B.E. 4-H Awards Committee will be having a



meeting on Tuesday, Nov. 18.

Demonstrations will start in January.

This meeting we have elected new club officers! Your 2026 club officers will be: Sydney as Vice President, Erin as Treasurer, Ellie as Reporter, Clara as Secretary, Aria as Sgt. at Arms, and myself as President. Good luck officers! The next meeting is on Wednesday, Dec. 10. Now to hand it off to Ellie. She is going to do an outstanding job!

Alice Keefe, 2025 F.M.B.E. 4-H Reporter

Potlatch Food Pantry

A big thank you to the scouts and friends for their 2025 Scouting for Food event. You brought us 2,004 pounds, 14 ounces of food, plus money! Thank you also for the gift in memory of Esther Nowack. What a wonderful community that brings us turkeys, bags of food, and money. Thank you.

The pantry is open Dec. 11 and 23 from 10 a.m. to noon and from 5 p.m. to 7 p.m. The food truck is coming to Grace Community Church on Dec. 31.

Reach out to us at PO Box 453, Potlatch, ID 83855. In a food emergency call (509) 330-1405 or city hall at (208) 875-0708 and we will meet you at the pantry.

We wish you a Merry Christmas!

Super Charge Your Gifting Power

Buy \$50 in Gift Cards → GET A \$10 BONUS CARD FREE!

Buy \$100 in Gift Cards → GET A \$25 BONUS CARD FREE!

Instant 20–25% EXTRA just for giving the gift everyone loves

Gift Cards Do Not Expire



**Gift cards can be used toward:
Shoppe Products, Art Classes, Printing, Graphic
Design Services & Advertising Services**

Stocking Stuffers plus...

- **Over 70 Different Journals**
- **Artisan Stationery**
- **Calligraphy Sets & Inks**
- **Sealing Wax Kits**
- **Christian Art Gifts**
- **Art Supplies & Books**
- **Kids Creative Kits**
- **Hand Painted Fluid Art Giftware**
- **Hand Painted Fluid Art Jewelry**



Holiday Hours: Mon-Sat 9-6

Potlatch Boy Scouts & Venture Crew

Annual Christmas Tree Lot

\$20 per tree suggested donation



**Find us at the
Potlatch "Y"**



Fresh trees cut each weekend

Scouts & Crew will be there to help:

*Starting 8 to 5pm the Friday after Thanksgiving
and every*



**Sat 8-5 pm
Sun 10-4pm**



A drop box will be available if you come by
at a time when we are not at the lot.

*A big "Thank You" to Forest Nursery for giving us
space for the trees!*



A TON of Thanks ... and Trees!

Congratulations Potlatch, Harvard, Onaway, and Princeton! With your amazing generosity, our Potlatch Scouts and Venture Crew collected and delivered about 2000 lbs. of food to the Potlatch Food Pantry. That is nearly one ton! Thank you all for your support of us and your community!

Moving to December (actually starting the day after Thanksgiving), we will have our annual Christmas tree lot at the "Y" – next to Forest Nursery on Hwy 95. In addition to the Friday after Thanksgiving, we will be there the following Saturdays from 8 a.m. to 5 p.m. and Sundays from 10 a.m. to 4 p.m. We will have hot cocoa and a warm fire, too! Please come check out our selection of natural forest trees cut by us. If you come by at another time, we'll have a drop box for payment. As always, our trees will be assorted shapes and sizes. We cut fresh trees every weekend! The suggested donation is \$20/tree. Also, look for us at this year's Flag Retirement Ceremony near Scenic Six Depot directly after the Lighted Christmas Parade. If you have old or torn flags that need to be respectfully retired, there are wood collection boxes outside City Hall, the Potlatch Library, and at the Log Inn.

For more info about our Troop & Crew, check out our Facebook page. You can also reach us through Facebook Messenger: <https://www.facebook.com/PotlatchScouts358>

We wish you all Happy Holidays!

- Potlatch Boy Scouts & Venture Crew -

Up To... \$2000 Holiday Cash Loan

No payments for 90 days!
8.99% APR OAC

Latah CREDIT UNION

YOUR SAVINGS INSURED TO \$250,000 PER ACCOUNT
AMERICAN SHARE INSURANCE
This institution is not federally insured.

LATAHCU.COOP



- 5" & 6" Seamless Rain Gutter
- Gutter Leaf Guard
- Roof Snow Break
- Gutter Cleaning

Contact us for a free estimate.

208-301-7668

gutterproz@outlook.com

gutterproz.net

Idaho RCE-59239

Washington GUTTEP*787LH



Licensed and Insured in Idaho & Washington

www.truenorthtreeservice.net

Keene Humphrey

- | | |
|-----------------------------|-------------------|
| Specializing in | ◆ Tree Removal |
| Hazardous | ◆ Tree Trimming |
| Tree Removal & | ◆ Stump Grinding |
| Trimming | ◆ Forest Mulching |
| CALL FOR FREE QUOTE! | ◆ Land Clearing |
| (208) 964-4663 | |

**** TOWNHOUSES WITH RIVER VIEWS! ****



1348 SQ FT ~ 3 BED ~ 2 BATH ~ 2 CAR GARAGE



401 & 402 HIGHLINE LANE
POTLATCH, ID
\$349,000/EACH
In the build process...
Still time to pick some
finishes!



KATHI NYGAARD
208-875-0345



For Information About ANY Listing Please Call:
KATHI NYGAARD, BROKER/REALTOR® 208.875.0345
230 6th Street, Potlatch ID



THE ROOFING BARN METAL PANELS & SUPPLY POTLATCH ~ IDAHO

208-875-9612

ASK ABOUT BULK DISCOUNTS & CONTRACTOR SPECIALS

STARLIGHT I.T. AND COMPUTER SERVICES

- Computer & Laptop Repair
- Data Backup & Recovery
- Virus & Malware Removal/Protection
- Network & Internet Connectivity
- Wi-Fi & Mesh Setup
- Computer Upgrades (CPU, Memory..etc)
- Gaming Builds
- Email and MS-Office Support
- Remote Assistance



Call: Micah @ 503-544-6693 Email: micah@itbystarlight.com

Visit: www.itbystarlight.com

Holiday Cookie Exchange at the VCC

- Live Music
- Decorate Christmas tree
- Cookie Exchange
- *Bring a dozen, take a dozen*



December 7
1:00pm-3:00pm
1007 Rothfork Rd





535 PINE STREET, POTLATCH ID • STE 9
(907) 321-4727



HOLIDAY HOURS
MONDAY THRU SATURDAY
10AM-5PM

Gift Certificates

Perfect for birthdays, holidays, or
"just because" – let them pick
exactly what they love!

FREEZE DRYERS

Made in Idaho

ORGANIC GRAINS, BEANS & TEAS • HANDMADE SOAPS • BOOKS
LOCAL HONEY • STARTER CULTURES • FREEZE DRIED MEALS & KITS
FUN FARM THEMED GIFTS • BUCK KNIVES • KNIFE SHARPENERS
HEIRLOOM (OPEN POLLINATED) SEEDS • ORGANIC LIVESTOCK FEEDS
LOCALLY ROASTED COFFEE • CANNING JARS & SUPPLIES • CANNERS
BEESWAX CANDLES • ORGANIC SPROUTING SUPPLIES • GRAIN MILLS
NORTH SPORE MUSHROOM GROWING KITS • FIRST AID KITS

Mountain Home Grange 2025 Quilt Raffle Fundraiser

What is the raffle money for?

Mountain Home Grange sponsors a yearly scholarship of \$500 for a graduating senior from Potlatch High School each year.

How to get raffle tickets

Raffle tickets are available online (email MtHomeGrangeOrder@gmail.com) and at the Winter Grange Craft Fair on Dec. 6. Drawing for this quilt will follow the Winter Craft event.

\$1 each 6 for \$5 13 for \$10



Clothing Closet (a clothing bank)

Tues. through Fri. 10 a.m. to 3 p.m.
535 Pine St, Suite 2, Potlatch, ID
208-875-9094

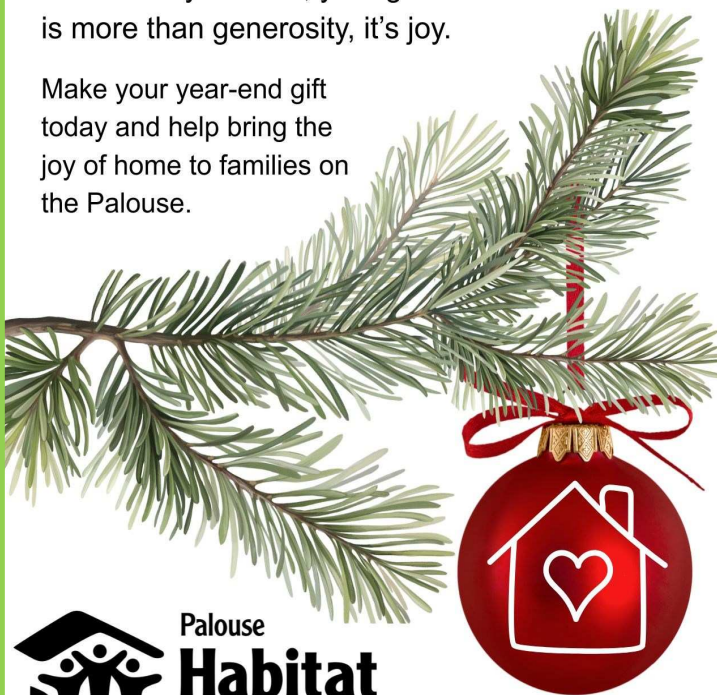
On Dec. 13, shop
the WI&M Depot,
upstairs and down,
for your Christmas gift-giving.



Bring Joy to The World

This holiday season, your gift
is more than generosity, it's joy.

Make your year-end gift
today and help bring the
joy of home to families on
the Palouse.



<https://palousehabitat.org>

Mountain Home Grange Holiday Craft Fair

local makers handmade goods, food, gifts

Saturday, December 6th

9am-3pm

At the Mountain Home Grange in
Potlatch, Idaho

Mt. Home Grange (MHG) Breakfast Burrito Fundraiser \$5 Donation

Preorder by Nov. 30 for guaranteed pick up at
the Winter Craft Fair, Grange Hall, 1044 Mt.
Home Road, after 11 a.m. on Dec. 6 . (Other
pick-up arrangements can be made.)

To preorder, email
MtHomeGrangeOrder@gmail.com and include
name, phone number, and number of burritos
ordered, or leave message at 208-
596-2845.



Burrito Ingredients: flour tortilla, pork
sausage, egg, potato, onion, green
pepper, cheddar cheese, salt, and
pepper. Burritos are wrapped in
parchment and foil ready to eat or freeze

CK Saddle Club news

Hello one and all! We've had another event-filled year. We welcome new members and send a huge thank you to all our members and supporters.



Our appreciation goes to many: our equine clinicians; 4-H Club members, their families, and leaders; CK Royalty and advisors; Potlatch Recreation District for helping the club purchase a superb arena groomer; the Club's gracious lessors, Ray and Marge Lienhard; our officers and governing board; our hard-working club members who completed projects on our cook shack and clubhouse, and those who spent much time and effort watering and dragging the arena, and maintaining the grounds. You are all greatly appreciated.

CK will again host a **winter Pinochle series**. These pinochle games will be on Saturday evenings: Jan. 31, Feb. 7, and Feb. 21. All pinochle games will start at 6 p.m. at our clubhouse: 1012 Bear Creek Road, Princeton. Refreshments will be available. Come and have some fun! For more information on Cayuse Kids and events, contact our 2026 Club President, David Moore (208) 568-1425. Happy Holidays!

The Cayuse Kids Saddle Club would like to thank the following sponsors for 2025.

Your donations are greatly appreciated.

Appaloosa Horse Club	Jack Buell Trucking
Hash Tree Company	Deep Creek Angus
Four Star Supply	Wilbur Ellis
Sam Dial Jewelers	Kendall Cattle Sales
Gritman Medical Center	Vowels Farm
Jess Ford	Nagle Belgians
Spence Hardware	Moscow Building Supply
Bennett Lumber Products	Ells Lock Service
Hansen Logging	Simons Farms
Farm Bureau Insurance	Lewiston Livestock
Les Schwab Tire Center	PS Espresso
Pickard Orthodontics	North Palouse Vet Clinic
MS Electric	Bob's Fire Extinguisher Service
Palouse Valley Septic	S&M Storage
Codi Jo's Wagon Wheel	Palouse Welding
Harvest Foods	Minden Angus
Latah Credit Union	Mundy's Machine & Welding
Pape Machinery	Potlatch Veterinary Clinic
Atlas Sand & Rock	Nancy's Fitness
Germer Construction	Lowry Logging
Toyota of Pullman	Potlatch Pack
Remax/Teri Skiles	Fugly's Porch
Pine Creek Logging	Affordable Consignments

Christmas Parade Entry Form

Please join us the our 30th Annual Lighted Christmas Parade on Saturday, Dec. 13.

This year's theme:

30 Years of Twinkling Lights and Floats

Circle entry category:

A) Commercial B) Individual C) Group D) Equestrian

Name of entry: _____

Number in group: _____

Contact person's name address/PO Box, and phone number:

Brief description of your entry and what you would like the announcer to say: _____

☐ Yes, we will participate on Saturday, December 13, 2025!

I understand that the Potlatch Christmas Parade Committee, the state of Idaho, the Idaho State Department of Transportation, the Idaho State Patrol, and the city of Potlatch cannot be held responsible for any accident or injury to any participant.

Signed: _____ Date: _____

Parade lineup time is 3:30 p.m. at the Potlatch Elementary School on Elm and Ponderosa.

Parade start time is 5 p.m.

Please return entry form to the Potlatch Christmas Parade Committee: PO Box 13, Potlatch, ID 83855

Entry forms are also available at
Potlatch Post Office and Potlatch City Hall.

**WHEN THROWING CANDY,
PLEASE WATCH OUT FOR CHILDREN**

St. Mary's Church Christmas Bazaar

Saturday, Dec. 6 from 9 a.m. to 1 p.m.

Potlatch Senior Center 645 Pine St.

Food-Crafts-Gifts

2nd-Time-Around Table

Refreshments & Great Raffle Prizes

\$300 First Prize!



Our proceeds support:
Potlatch Food Pantry
Pastors Association Baskets
Palouse Care Network
Sojourners Alliance
St. Vincent de Paul
and more

Potlatch Lions Club Holiday Sign Board is up!

If your name or business appears, we are asking
for a voluntary \$10 donation sent to:

Potlatch Lions Club
P.O. Box 322 | Potlatch ID 83855

If you would like your name or business
advertised on the sign board for next year,
please let us know by sending us an e-mail to:

PotlatchLions@gmail.com.

Thank you for your continued support throughout the
year as we strive to bring value to our special
community in the form of Potlatch Community Days,
Potlatch Lions Summer Concert Series, Santa Claus
visits Potlatch, Lions Club Scholarship Program,
Lions Club Eye Care Program, and more.

Image by rawpixel.com on Freepik



For Sale

18" Doll Clothes and Accessories

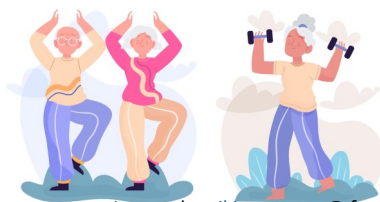
Ph 208-596-8459 - text only

See you at the VFW Cabin Dec. 13

Bring your doll and get a dress for \$1 (\$5 value)

While supplies last.

MERRY CHRISTMAS!!!



Images by pikisuperstar @ freepik.com

Fit & Fall Proof™ FREE exercise sessions
at Palouse River Community Center, Princeton, ID
on Tuesdays & Fridays, 9-10 a.m.

Christmas at the Cabin*

Craft Fair

Saturday, Dec. 13

9 a.m. to 4 p.m.

Vendors, contact Lenny Rasmussen
for information. Please leave message at
(208) 301-1632.

*The VFW/American Legion Log Cabin



Image by freepik

The Potlatch Lions Club Proudly Brings You...

Free *Pictures with Santa!*

Ho-ho-ho! This year Santa's scrubbin' up, gettin' that ole' red suit fluffed, sparklin' and smellin' like gingerbread. He's fixin' to two-step into town with a twinkle in his eye, brighter than a coon dog's grin, just itchin' to holler 'Howdy!' to all the young'uns!

*Carriage
Rides
Kids
Activities*

*Hot
Cocoa*
Cookies
(Snob Hill Bakery)

8AM -10AM

Sat. Dec. 13th

**Potlatch Lions Club House
735 Pine Street • Potlatch**



TGBF WINTER/SPRING FUNDRAISER

FOR 2 DRAWINGS (same prizes X2)!

Prize 1: 1/2 Pig Cut and Wrapped PLUS Freezer (7 cu ft)

Prize 2: Side of BBQ Ribs (Spring Banquet or delivered)

Prize 3: Two Gamebird Foundation Coffee Mugs

Donation of \$5.00/Ticket OR 5/\$20.00

Drawings held January 8, 2026 & Saturday, March 21, 2026

at The Gamebird Foundation 2026 Annual Banquet

~ Winner need not be present to win ~



Pines RV Park

Events, Camping and Forever Memories

4510 Highway 6 Harvard, Idaho

**Merry...
CHRISTMAS**

- Propane & Ice
- Beer & Wine
- Snacks & Gifts
- IDFG Sold Here
(Cash or Check)
- Camping



Snack Shack:

Tues - Sat 11am - 6pm

Sun - Mon Closed

**We will be closed
Dec. 22nd - Jan. 5th**

Happy Holidays!



**Lunch,
Dinner
and Snacks!**

Hot Sandwiches ♦ Soups ♦ Pizza ♦ Beer on tap ♦ Ice Cream ♦ Desserts

www.PinesRVcamping.com • 530-949-9105



ALPINE FORESTRY MULCHING
CORY DIRKS 208-304-8890

**FORESTRY MULCHING • LAND CLEARING
FIRE CONTROL • SITE PREPARATION
POWER LINE CLEARING • PASTURE CLEANUP
FENCE & PROPERTY LINES
SKIDSTEER WORK**
CORY DIRKS
208-304-8890
ALPINEFORESTRYMULCHING@GMAIL.COM

Wood's
CRUSHING & HAULING, INC.
ROCK • ASPHALT • CONCRETE

Main Office 208 263-4800 Sandpoint, Idaho

KOEHN ROCK PIT, HWY 9, PRINCETON
FOR ORDERS & DELIVERY CALL:
VERLE KOEHN 208 596-9030

PRODUCT:

3/8" chips
1/2" chips
3/4" minus
1 1/4" minus
2 1/2" minus
6" minus
1 1/4" Clean Drain Rock
Pit Run
Fill Dirt
Decorative Boulders



LARSON ROCK

Base Rock Roads Site Prep Ponds

Clean Rip Rap Decorative Boulders

Call Jim

208-596-2170

1062 Guernsey Cutoff, Potlatch, ID 83855



**Roofing - Siding - Decks -
And Moore!**



We also plow snow!!!

208-301-0815

www.MooreBroz.com

www.Facebook.com/moorebroz

**HATTER CREEK
EARTHWORKS LLC**

**ROADS | DRIVEWAYS | SEPTIC SYSTEMS
EXCAVATION | PONDS | ROCK & GRAVEL**

208/875-8860 office

Dennis Ownbey

HatterCreekEarthworks.com

Our Schools

As we enter the holiday season, I want to take this opportunity to express my gratitude. I am grateful for the many ways this community shows up to support each other. I am grateful for the support you provide to our students in so many ways: attending events and cheering on musicians and student athletes, watching parades, buying raffle tickets, poinsettias, concessions, donating supplies, and so much more. Thank you for caring for our students and staff!

We had wonderful community support at our official ribbon/wood cutting ceremony for our Ag Shop. Thanks to all who came to celebrate with us! We look forward to the great things that will happen in this newly remodeled building! We also look forward to continued collaboration with our great community partners.

We had the privilege of thanking our Veterans on Nov. 11 at a joint assembly led by the Jr./Sr. High School Student Body officers and Logger Leaders from the elementary school. Thanks to Sheriff Skiles and Mr. Joel Emerson for sharing their thoughts about what it means to be a Veteran.

We also honored a Logger super fan at our recent fall sports banquet. Coralee Smith was recognized as the “Fall Fan of the Year”. It was a wonderful evening filled with pride as we



celebrated all of our athletes and their accomplishments! Ky Winther was recently named the “Prep Athlete of the Week” after her performance in the state soccer tournament that led Moscow to a Championship. Logger volleyball players and Logger football players were selected in the 2025 Whitepine All-League teams.

Congratulations to Aubree

Lisher, Maddie Smith, Olivia Smith, Riley Tucker, Jacob Keck, Jay Marshall, and Avery Smith.

Our Lady Logger volleyball team was chosen as an October 2025 “Les Schwab Team of the Month” for their success in competition, performance in the classroom, and service to their community! Congratulations on this recognition!

You may have noticed some attendance messages on our Facebook page lately. Research shows that students who show up do better overall in school and beyond. The State of Idaho defines “chronic absenteeism” as missing 10 or more school days during a school year. This is any type of absence. It is important to be in attendance to ensure students don’t miss instruction or other learning opportunities. Here are a couple of examples of some recent learning opportunities:

Mr. Sawyer’s woodshop class put their skills to the test as they experimented with the strength of glue, nails, and screws

using different variables. This type of hands-on experimentation strengthens critical thinking and problem-solving skills.

Mrs. O’Shaughnessy’s accounting students put their skills to work while playing Monopoly without money. The students’ primary objective is not just to win the game, but to accurately capture every financial event in the game. This provides the data they need to practice and complete the full accounting cycle by tracking checking account expenditures as journal entries and reconciling them for accuracy.

Third graders in Mrs. Burkgart’s class are also reinforcing math skills by creating their own math games! Students design cards with equations, plan game boards, write the rules, and then play each other’s creations. What a fun way to practice math and encourage creativity!

Michael Montgomery will join me for Coffee with the Superintendent on Tuesday, Dec. 2 at 9 a.m. at the Tamarack. This is a great time to come visit and ask questions. There isn’t a formal agenda. Those who come and participate set the topic. We look forward to seeing you there.

Janet Avery, Superintendent, janet.avery@psd285.org
208-875-0327 x1101 Potlatch School District #285
“Small Town - Big Hearts - Bright Futures”
#PSD285 Go Loggers!

POTLATCH COMMUNITY Talent Show

Do you have a talent you would like to share with others?

We are looking for musicians, singers, dancers, actors, poets, comedians and more!

THIS TALENT SHOW IS OPEN TO ALL AGES.

SIGN UP TODAY BY SCANNING THE QR CODE!

If you need help signing up, call (208)596-6499

SATURDAY, JANUARY 24, 2026
4 PM - PALOUSE RIVER COMMUNITY CENTER
SPONSORED BY THE POTLATCH ARTS COUNCIL



Monday - Friday, 8-5, Saturday 8-2
140 6th St., Potlatch
(208) 875-1541

TOOL SALE

MARK YOUR CALENDARS

DECEMBER 8th - 20th

HOLIDAY DEALS ON BRANDS LIKE



Let us bring your vision to life! Whether it's a functional piece or a work of art, we can craft your dreams into reality.

WE DO IT ALL!

- | | |
|---------------------------|---------------------|
| ◇ Custom Furniture Design | ◇ Built Ins |
| ◇ Tables | ◇ Restoration |
| ◇ Chairs | ◇ Coffee Tables |
| ◇ Home Décor | ◇ Entryway Tables |
| ◇ Shelves | and so much more... |
| ◇ Cabinets | |

CONTACT US:

Phone: 208-669-3415

Email: SchultzCustomWoodworking@gmail.com

Facebook: [/schultzcustomwoodworking](https://www.facebook.com/schultzcustomwoodworking)

Instagram: [@schultzcustomwoodworking](https://www.instagram.com/schultzcustomwoodworking)

Located in Potlatch, Idaho

CALL US:
208-301-3545



SERVICES OFFERED:

- Exhaust
- Brakes
- Oil Changes
- Flat Repair
- Other Minor Repairs

AND THE BEST DEALS ON NEW TIRES!



LOCATED AT: 1021 REYNOLDS ROAD, PRINCETON, ID



Check out our vehicle inventory at
fmautopotlatch.com

105 8th St
Potlatch, ID 83855

208-875-1799



NUTRIENT NIGHT

**Discover what your body's been missing—
and how to fix it naturally.**

A free monthly community class from Potlatch Holistic Haven, exploring one vitamin and one mineral at a time. Learn what they do, how to recognize deficiency or excess, and the best ways to get them from real food.

Class Series Begins January 13, 2026

**Space is limited, please register by
emailing: kayla@potlatchholistichaven.com**



Elissa M Edmonds, Agent
116 West C Street
Moscow, ID 83843
Bus: 208-882-3431
elissa@elissaedmonds.com

**Get great service &
great rates.**

You know I'm always here with Good Neighbor service. But I'm also here with surprisingly great rates for everyone. Call me for a quote to see how much you can save. You might be surprised.

Like a good neighbor,
State Farm is there.®

Individual premiums will vary by customer. All applicants subject to State Farm® underwriting requirements.

State Farm
Bloomington, IL

2001875



Christmas Eve

Candlelight Service
December 24 at 5 p.m.

*Join us to celebrate the birth of
Jesus Christ, the Light of the world*

Bible Believers Church

Service will run from 5 p.m.-6 p.m. with refreshments immediately following at the Viola Community Center 1007 Rothfork Rd, Viola, ID · bbcpalouse.com



Area Churches (listed alphabetically)

Bible Believers Church of the Palouse at Viola Community Center, 1007 Rothfork Rd., Viola, ID 83872
Sundays 10:45 a.m. www.bbcpalouse.com

Church of Jesus Christ of Latter-Day Saints at 4 Cedar St. Potlatch, ID 83855. 509-397-2116. Sunday worship 10 a.m.
Sunday phone: 208-875-0009

Elmore United Methodist at 6197 Hwy 95, Potlatch, ID 83855.
www.elmorechurch.org Wednesday Prayer Meeting, 6 p.m.
Sunday School 9:30 a.m. Worship 10:45 a.m. Pastor Daniel Willms 208-691-0884 elmorepastor@outlook.com

Faith Church at 401 3rd St, PO Box 208, Onaway, ID 83855.
Pastor Lee Nicholson 208-596-0462 Women's Bible study, 6:30 p.m. on Wednesday at Nicholson's. Men's Bible study, 6:30 p.m. on Wednesday at the church. Sunday at 9:30 a.m. Kids, Teen & Adult classes. Worship 10:30 a.m.
www.faithchurchonaway.org

Family Bible Fellowship at Palouse River Community Center, Princeton, ID 83857. Nathan Glassman 208-596-9080.
Sunday 10:30 a.m.

Freeze Community Church at 617 W. Freeze Rd, Potlatch, ID 83855. Sunday Worship: 11 a.m.
208-669-0806, 208-875-1272, 208-669-0069

Grace Community Church, at 305 4th St, Potlatch, ID 83855.
208-875-0015. Sunday School 9 a.m., Worship 10 a.m.

Princeton Church of the Nazarene at 1008 Gold Hill Rd. Princeton, ID 83857. Pastor Robert Lambert. 208-596-3780.
Sunday School for all ages at 9:30 a.m. Worship at 10:45 a.m.

St. Mary's Catholic Church at 725 Spruce St. Potlatch, ID 83855. 208-882-4613. Mass Sunday 8 a.m.

Wild Rose Mennonite Congregation at 1350 Chaney Rd., Viola, ID 83872. Verle Koehn 208-875-1480

COME WORSHIP WITH US



Children's Breakfast: 9:10 AM

Sunday School (All Ages): 9:30 AM

Worship: 10:30 AM

401 3RD STREET, ONAWAY | 208.596-0462

PASTOR LEE NICHOLSON

www.FaithChurchOnaway.org



CHECK OUR WEBSITE FOR BIBLE STUDY TIMES

CHRISTMAS AT ELMORE

A Savior is born!

Sunday, Dec. 21 - 10:45 a.m.

Annual Christmas Music Program

Refreshments to follow

Christmas Eve - 4 p.m.

Silent Night Candlelight Service

All are welcome!

Elmore United Methodist Church

6147 Highway 95

Pastor Dan Willms - (208) 691-0884

elmorechurch.org



For regular Sunday Nazarene services times,
see Area Churches directory on this page.

Calendar of Events

- Dec. 2 Coffee with the Superintendent, 9 a.m. at the Tamarack Cafe, Potlatch, ID
Princeton-Hampton Sewer District meets at 6 p.m. in the Princeton Ladies Clubhouse, Princeton, ID
VFW Post 10300/American Legion meets 7 p.m. at the Log Cabin, Potlatch, ID
- Dec.3 Lions Club meets at 6 p.m., 735 Pine St., Potlatch, ID
Palouse River Community Center meets at 7 p.m. in the PRCC, Princeton, ID
- Dec. 4 Princeton Community Ladies Club meets at 1:30 p.m. in the clubhouse, Princeton, ID
The Gamebird Foundation meets at 6 p.m. in the Farm Bureau board room, Moscow, ID
- Dec. 6 St. Mary's Church Christmas Bazaar from 9 a.m. - 1 p.m. at 645 Pine St., Potlatch, ID
Mt. Home Grange Winter Craft Fair from 9 a.m. - 3 p.m. at the Mt. Home Grange Hall, Potlatch, ID
- Dec. 7 Cayuse Kids Saddle Club meets at 9 a.m. in the CK clubhouse on Bear Creek Rd., Princeton, ID
Holiday Cookie Exchange from 1-3 p.m. at the Viola Community Center, Viola, ID. Bring a dozen treats to share, socialize and decorate a Christmas tree, and take an assorted dozen treats home! *See pg. 6*
- Dec. 8 Mt Home Grange meets at 6:30 p.m., Potlatch, ID
Potlatch City Council meets at 7 p.m. in City Hall, Potlatch, ID
- Dec. 10 F.M.B.E. 4-H meets at Palouse River Community Center, Princeton, ID
Harvard Ladies Aid meets at Harvard Hall
Viola Community & Board meet from 5-7 p.m., Viola Community Center, Viola, ID
Potlatch School Board of Trustees meets at 6 p.m. in the Potlatch Jr./Sr. High School, Potlatch, ID
- Dec. 11 Potlatch Food Pantry open from 10 a.m.-noon and from 5-7 p.m. *See pg. 3*
- Dec.13 Santa to visit Lions Club, from 8-10 a.m. in the Lions Clubhouse, 735 Pine St., Potlatch, ID *See pg. 11*
Christmas at the Cabin Craft Fair from 9 a.m.-4 p.m. at the American Legion/VFW Cabin, Potlatch, ID
Children's Christmas Store, from 10 a.m.-noon in the Elementary School Gym, Potlatch, ID *See pg. 3*
Potlatch Lighted Christmas Parade, begins at 5 p.m. Parade entrants line up at the swimming pool at 3:30 p.m.
- Dec.18 Potlatch Recreation District meets at 7 p.m. in City Hall, Potlatch, ID
- Dec.22 Potlatch City Council meets at 7 p.m. in City Hall, Potlatch, ID
- Dec.23 Potlatch Food Pantry open from 10 a.m.-noon and from 5-7 p.m. *See pg. 3*
- Dec. 24 Christmas Eve worship services. *See pgs. 16 & 17*
- Dec.25 Christmas Day
- Dec. 31 Idaho Food Truck, Grace Community Church, Potlatch, ID *See pg. 3*

The Gamebird Foundation News

Wishing you all the happiest of holidays from your friends at The Gamebird Foundation!

Raffle: We have some wonderful stocking stuffers! Get your stocking stuffer Gamebird Foundation **raffle tickets** today and DOUBLE YOUR ODDS! Purchase tickets before Jan. 8 and you'll be entered for TWO drawings! We also have **Gamebird Foundation coffee mugs** for a donation of \$25 each, made by local artist Andy Sewell. *See raffle ad on page 12.*

Membership: Don't forget to renew your memberships for 2026 – just \$20 for the entire family! Thank you to those who have already renewed. Membership and fundraising donations go right back into raising and feeding birds, assisting landowners to provide habitat, and making our program mission possible!

Youth Access Yes is open for hunting! We want to remind you that there is a fantastic opportunity for youth to hunt upland game birds on Idaho Department of Fish & Game (IDFG) Access Yes property near Potlatch, Idaho. The property lies along the Palouse River. Members of the Game Bird Foundation work with IDFG to stock pheasants at this particular site for youth and adults to have a great pheasant hunt! The hunting season continues through the fall with pheasants stocked weekly. Go to the IDFG website for location and details.

Save the Date! Our free annual BBQ Rib Potluck Banquet and Auction is set for **Saturday, March 21, 2026, at the Latah County Fairground Building: Doors open at 3:30 p.m. with a hosted bar.** Entry is a side dish or dessert! If you have any silent or live auction items to donate to our organization to raise funds, please contact us. We are as grassroots as a non-profit can get nowadays! Thank you!

To order tickets, coffee mugs, and pay memberships, you can go to the GBF website at thegamebirdfoundation.org. Hit "Donation" at the top, and it will take you to the donation page where the donations are in \$5 increments. Just figure out how many fives you want to donate. Scroll down and write in "raffle tickets", so we know to send you the tickets. We will fill out the tickets for you and send you your stubs. If you would rather send a check, you can mail it to: The Gamebird Foundation, PO Box 395, Potlatch, ID 83855. Again, we will fill out the tickets and get you your stubs. Remember, The Gamebird Foundation is a 501(c)3 non-profit organization. Any donation is a tax write-off. Please check with your accountant.

We will meet on Thursday, Dec. 4 at 6 p.m. and on Jan. 8 at 6 p.m. at the Moscow Farm Bureau Insurance Office Conference Room at 220 Farm Road, Moscow, Idaho. Happy Holidays!

Tammi Johnson, Secretary, TGBF
thegamebirdfoundation@gmail.com

Fit & Fall Proof FREE exercise sessions
at Palouse River Community Center, Princeton, ID
on Tuesdays & Fridays, 9-10 a.m.

Pinochle players welcome! Palouse River Community Center in Princeton on Thursday nights at 7 p.m.

Moscow AA meets at the Latah Recovery Center, 531 S. Main, Suite #B at noon on Mon-Tues-Thurs-Fri-Sat 208-883-1045

Play Bingo at the Palouse River Community Center in Princeton on Mondays at 6:30 p.m.

Palouse River Community Center
(PRCC) Rental questions call or text Tia McKinney 208-301-4269
See PRCC Facebook page

Potlatch AA meets at St. Mary's Catholic Church, 725 Spruce St, on Tuesdays 6:30 p.m.